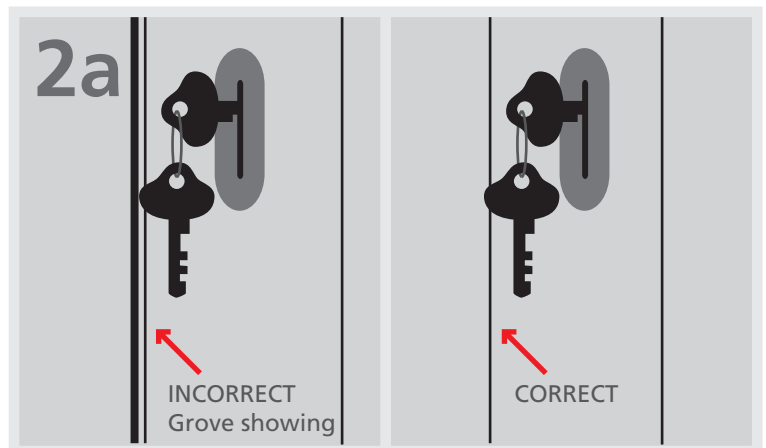
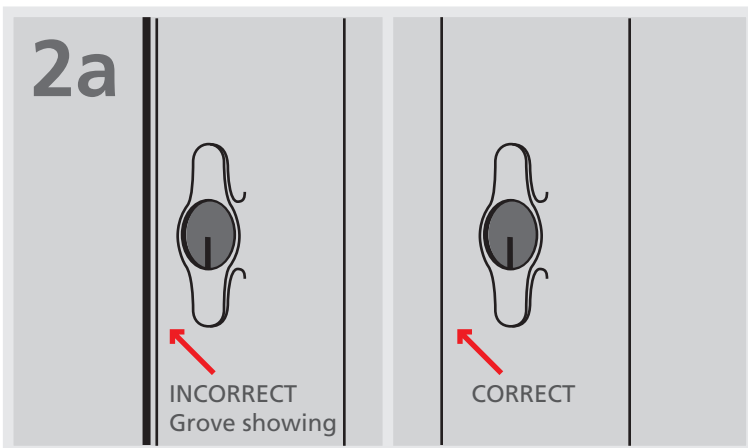
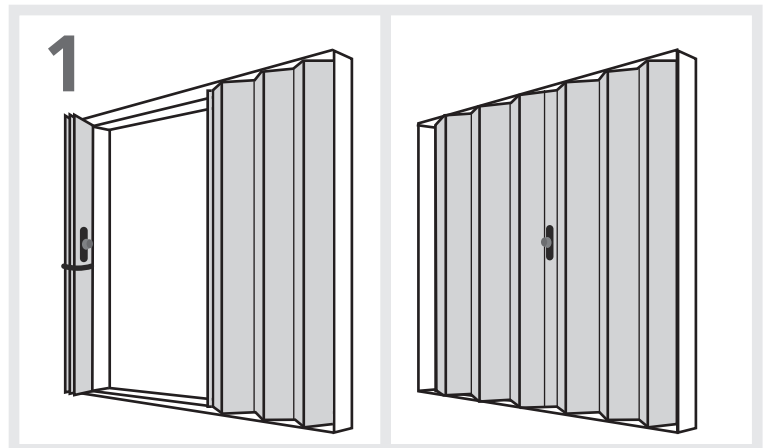


Follow all safety precautions when installing hurricane panels. Read directions on power tools and ladders.

INSTRUCTIONS:

1. Release the accordion straps & slide to the closed position.
- 2a. UNI-MATE LOCK: Pinch the blades together before pushing in the lock. Push the lock in until it clicks. **NOTE: The shutter is not closed properly if groove is showing.**
- 2b. BOX LOCK: If you have handles, grab handles together then turn lock. **NOTE: The shutter is not closed properly if groove is showing.**



INSTRUCTIONS FOR REMOVEABLE WALK-OVER TRACKS:

1. Remove screws and lay track down; using same screws to anchor track to floor.

Track covers are available for purchase through our office – helps to keep tracks clear of dirt and debris

MAINTENANCE:

Opened & closed accordion shutters on a semi annual basis.

All locks must be sprayed with a non-sticking lubricate – white lithium grease or pure silicone. (DO NOT use WD40, it is a sticking oil)

If the wheel is beginning to stick use the same spray and lube.

Watch out for any wasp nest & clear all tracks.